

WiFi & RF Smart AC Switch

- WiFi + RF + AC push smart switch, without dimming function.
- To switch single color LED lamps, traditional incandescent and halogen lights.
- Tuya APP cloud control, support on/off, delay turn on/off light and timer run function.
- Voice control, support for Amazon Alexa, Google Assistant, Tmall Genie and Xiaodu smart speakers.
- Compatibility with RF 2.4G dimming remote control.
- Each SS-B(WT) controller can also work as WiFi-RF converter, then use Tuya APP to control one or more RF switch or controller synchronously.
- Connect with external push switch optional.
- Easy to be placed in standard wall junction box behind a push switch.
- Over-heat / Over-load protection, recover automatically.

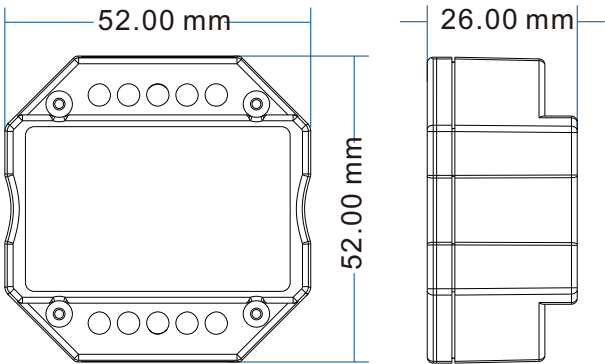
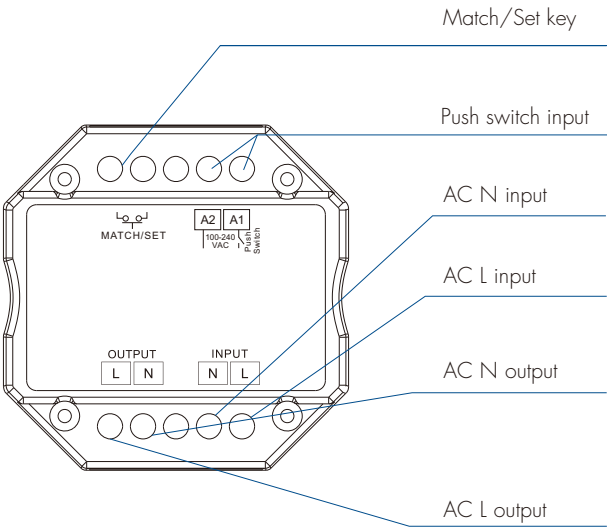


CE RoHS

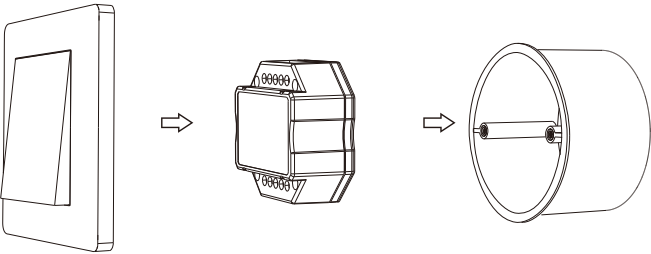
Technical Parameters

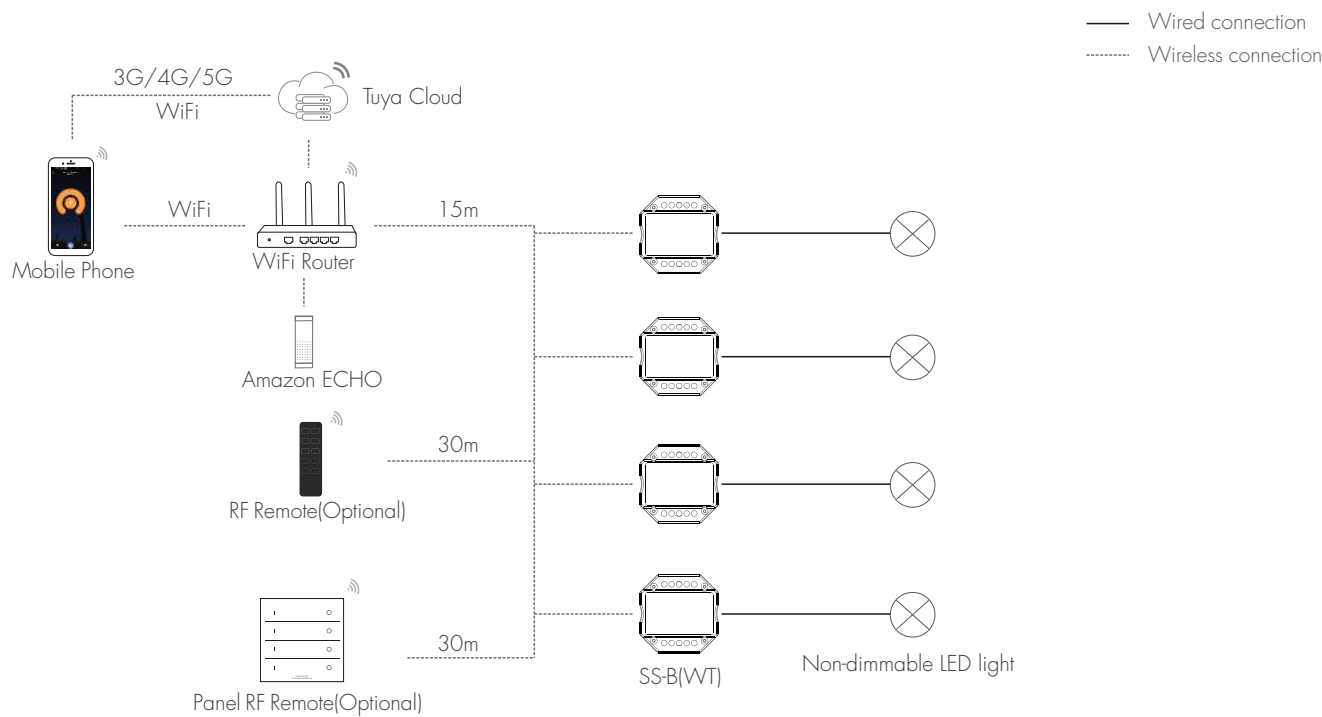
Input and Output		Environment		Safety and EMC	
Input voltage	AC100-240V	Operation temperature	Ta: -30℃ ~ +55℃	Safety standard	EN 60669-1/-2
Output voltage	AC100-240V	Case temperature (Max.)	Tc: +85℃	EMC standard	EN IEC 55015/EN IEC 61547 ETSI EN 301 489-1/-3/-17
Output current	Max 1.5A	IP rating	IP20	Radio Equipment	ETSI EN 300 440 ETSI EN 300 328
Output power	150-360W	Warranty and Protection		Certification	CE
Input signal	WiFi + RF + Push Dim	Warranty	5 years	Package	
Control distance	30m(Barrier-free space)	Protection	Over-heat / Over-load / recover automatically	Size	l60 x W60 x H40mm
				Gross weight	0.051kg

Mechanical Structures and Installations



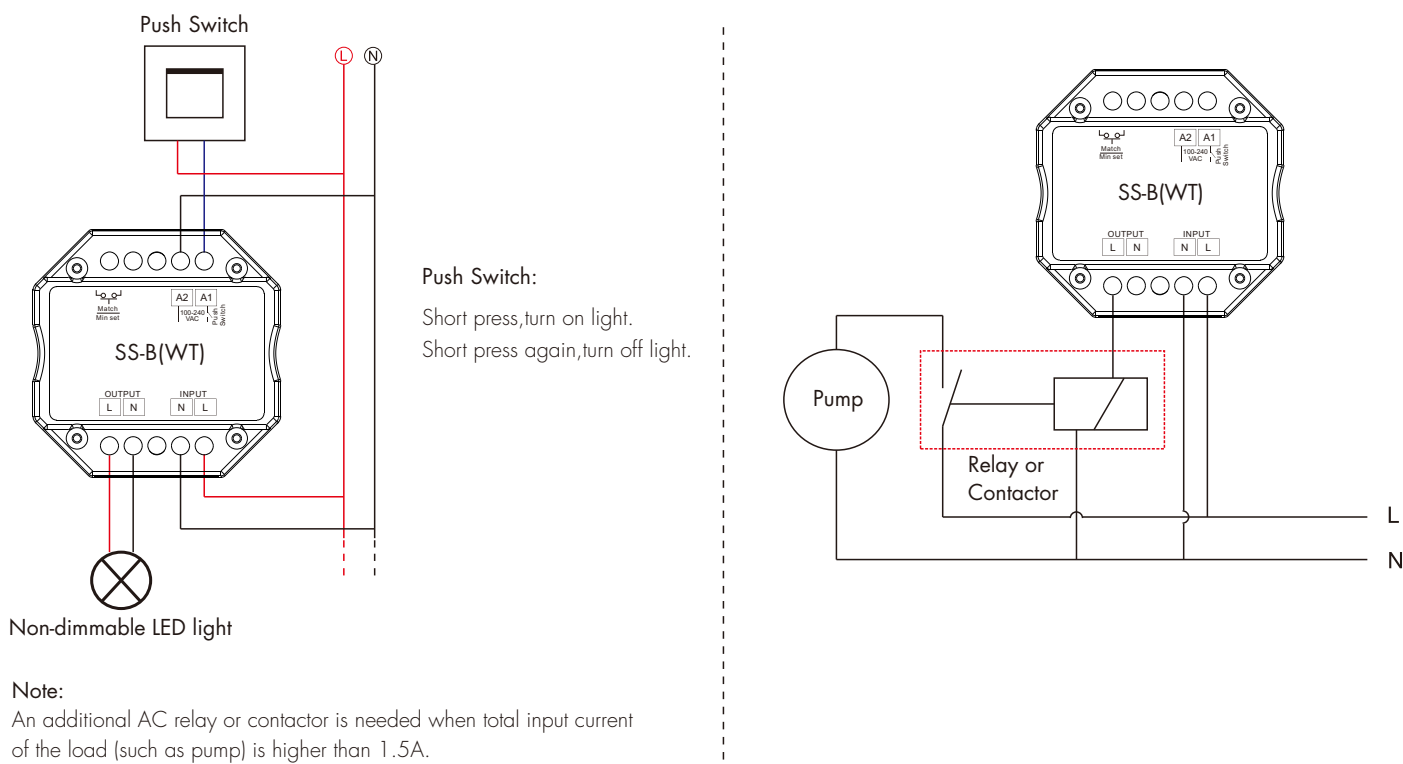
Typical Wall Junction Box Mounting





- Note:
1. The above distance is measured in spacious (no obstacle) environment, please refer to the actual test distance before installation.
 2. Please check if the WiFi router net in 2.4G band, the 5G band is not available, and do not hide your router network.
 3. Please keep the distance between SS-B(WT) devices and router close, and check the WiFi signals.

Wiring Diagram



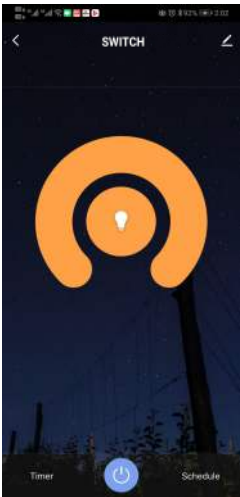
Tuya Smart APP Network Connection and Operation

Press and hold Match/Set key for 5s, or push twice Match/Set key fastly,
Clear previous network connection, enter WiFi config mode,
the blue LED indicator flash fastly.

If Tuya smart APP network connection succeed, the blue LED indicator will stop flash,
and in Tuya smart APP, you can find SWITCH device.

When controlling the light with Tuya Smart/Smart Life APP, if the network connection is poor,
you can control the light with Bluetooth connection within the Bluetooth control range.
Note: The light can not be directly controlled by Bluetooth without WiFi configuration.

Tuya smart APP interface operation: Touch on/off key to turn on or off light.



SS-B(WT) Match RF Remote Control (Optional)

End user can choose the suitable match/delete ways. Two options are offered for selection:

Use the SS-B(WT)'s Match key

Match:
Short press match key of SS-B(WT),
immediately press on/off key (single zone remote)
or zone key (multiple zone remote) on the remote.

Delete:
Press and hold match key of SS-B(WT) for 10s to delete all match,
The light blinks 5 times means all matched remotes were deleted.

Use Power Restart

Match:
Switch off the power of SS-B(WT), then switch on power, repeat again,
Immediately short press on/off key (single zone remote)
or zone key (multiple zone remote) 3 times on the remote.
The light blinks 3 times means match is successful.

Delete:
Switch off the power of SS-B(WT), then switch on power, repeat again,
Immediately short press on/off key (single zone remote)
or zone key (multiple zone remote) 5 times on the remote.
The light blinks 5 times means all matched remotes were deleted.

SS-B(WT) Work as WiFi-RF Converter to Match Other RF Switch or Controller

End user can choose the suitable match/delete ways. Two options are offered for selection:

Use the controller's Match key

Match:
Short press match key of the controller,
immediately press on/off key on the Tuya APP.
The LED indicator fast flash a few times means match is successful.

Delete:
Press and hold match key of the controller for 5s,
The LED indicator fast flash a few times means match was deleted.

Use Power Restart

Match:
Switch off the power of the controller, then switch on power, repeat again,
Immediately short press on/off key 3 times on the Tuya APP.
The light blinks 3 times means match is successful.

Delete:
Switch off the power of the controller, then switch on power, repeat again,
Immediately short press on/off key 5 times on the Tuya APP.
The light blinks 5 times means match was deleted.